



CROCHET | SKILL LEVEL: **EASY**

ABBREVIATIONS

Approx = Approximately

Beg = Beginning

Ch = Chain(s)

Dc = Double crochet

Hdc = Half double crochet

Picot = Ch 3. Sl st in 3rd ch from hook

Rep = Repeat

Rnd(s) = Round(s)

RS = Right side

Sc = Single crochet

Sl st = Slip stitch

Sp(s) = Space(s)

St(s) = Stitches(es)

Tog = Together

MEASUREMENTS

Approx 48" [122 cm] wide x 60" [152 cm] long.

GAUGE

Motif = 9" [23 cm] square.

INSTRUCTIONS

Notes

- Ch 2 at beg of rnd doesn't count as st.
- Ch 3 at beg of rnd counts as dc.
- Ch 5 at beg of rnd counts as dc and ch-2.

Motif 1: Make 8 using MC as Color 1, A as Color 2, B as Color 3.

Motif 2: Make 8 using A as Color 1, B as Color 2, C as Color 3.

Motif 3: Make 7 using C as Color 1, MC as Color 2, A as Color 3.

Motif 4: Make 7 using B as Color 1, C as Color 2, MC as Color 3.

MOTIF

With Color 1, ch 4. Join with sl st to first ch to form a ring. *See diagram on page 3.*

1st rnd: Ch 1. 10 sc in ring. Join with sl st to first sc. 10 sc.

MATERIALS

Bernat® Maker™ (8.8 oz/250 g; 317 yds/290 m)

Main Color (MC) Lichen (06014) **1 ball**

Contrast A Saffron (06011) **1 ball**

Contrast B Sky Blue (06009) **1 ball**

Contrast C Soft Peach (06006) **1 ball**

Contrast D Cream (06003) **5 balls**

Size U.S. J/10 [6.5 mm] Susan Bates® Silvalume® crochet hook **or size needed to obtain gauge.** Susan Bates® stitch markers. Susan Bates® yarn needle.

2nd rnd: Ch 3. 1 dc in same sp as sl st. 2 dc in each sc around. Join with sl st to top of ch-3. 20 dc. Fasten off.

3rd rnd: Join Color 2 with sl st to any dc. Ch 5. *(1 dc. Ch 2) in next dc. Rep from * around. Join with sl st to 3rd ch of ch-5. 20 (1 dc, ch-2) groups.

4th rnd: Sl st to next ch-2 sp. Ch 1. 2 sc in same sp as last sl st. Ch 1. Skip next dc. *2 sc in next ch-1 sp. Ch 1. Skip next dc. Rep from * around. Join with sl st to first sc. Fasten off.

5th rnd: Join Color 3 with sl st in any ch-1 sp. Ch 5. Skip next 2 sc. *2 dc in next ch-1 sp. Ch 2. Skip next 2 sc. Rep from * around. 1 dc in first ch-1 sp (same as beg ch-5). Join with sl st to 3rd ch of ch-5. 20 (2 dc, ch 2) groups.

6th rnd: Sl st to next ch-2 sp. Ch 1. 2 sc in same sp as last sl st. Ch 3. Skip next 2 dc. *2 sc in next ch-2 sp. Ch 3. Skip next 2 dc. Rep from * around. Join with sl st to first sc. Fasten off.

7th rnd: Join D with sl st in any ch-3 sp. Ch 5. Skip next 2 sc. *3 dc in next ch-3 sp. Ch 2. Skip next 2 sc. Rep from * around. 2 dc in first ch-3 sp (same as beg ch-5). Join with sl st to 3rd ch of ch-5. 20 groups of (3 dc, ch 2).

8th rnd: Sl st in next ch-2 sp. Ch 3. (2 dc. Ch 2. 3 dc) in same sp as last sl st. Ch 1. *3 dc in next ch-2 sp. 3 hdc in each of next 2 ch-2 sps. 3 dc in next ch-2 sp. Ch 1. (3 dc. Ch 2. 3 dc) in next ch-2 sp. Ch 1. Rep from * 3 times more. Join with sl st to top of ch-3.

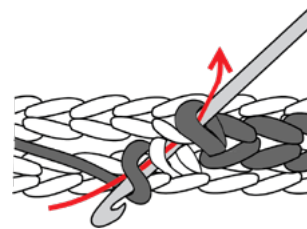
9th rnd: Sl st in each of next 2 dc and ch-2 sp. Ch 3. (2 dc. Ch 2. 3 dc) in same sp as last sl st. *1 dc in each of next 3 dc. 1 dc in next ch-1 sp. 1 hdc in each of next 3 dc. 1 sc in each of next 6 hdc. 1 hdc in each of next 3 dc. 1 dc in next ch-1 sp. 1 dc in each of next 3 dc. (3 dc. Ch 2. 3 dc) in next ch-2 sp. Rep from * 3 times more. Join with sl st to beg ch-3.

10th rnd: Ch 1. Ch 1. 1 sc in same sp as sl st. *1 sc in each st to next corner ch-2 sp. 3 sc in next ch-2 sp. Rep from * 3 times more. 1 sc in each st to end of rnd. Join with sl st to first sc. Fasten off.

FINISHING

Pin all Motifs to measurements. Cover with a damp cloth leaving cloth to dry.

Following Assembly Diagram on page 4, join Motifs tog into 5 strips with 6 Motifs in each strip, using flat joining sl st.



FLAT SL ST JOINING DIAGRAM

Edging

Note: Edging worked with RS of Blanket facing.

1st rnd: Join D with sl st in any corner ch-2 sp. Ch 1. 2 sc in same sp as sl st. *1 sc in each st to next corner ch-2 sp. (1 sc. Ch 2. 1 sc) in corner ch-2 sp. Rep from * 3 times more. 1 sc in each st to end of rnd. 1 sc in first ch-2 sp. Join with hdc to first sc (counts as corner ch-2).

2nd rnd: Ch 1. (1 sc. Ch 2. 1 sc) around post of joining hdc. [*Ch 1. Skip next sc. 1 sc in next sc.* Rep from * to * to next ch-2 sp. Ch 1. (1 sc. Ch 2. 1 sc) in next ch-2 sp] 3 times. Rep from * to * to end of rnd. Ch 1. Join with sl st to first sc. Fasten off.

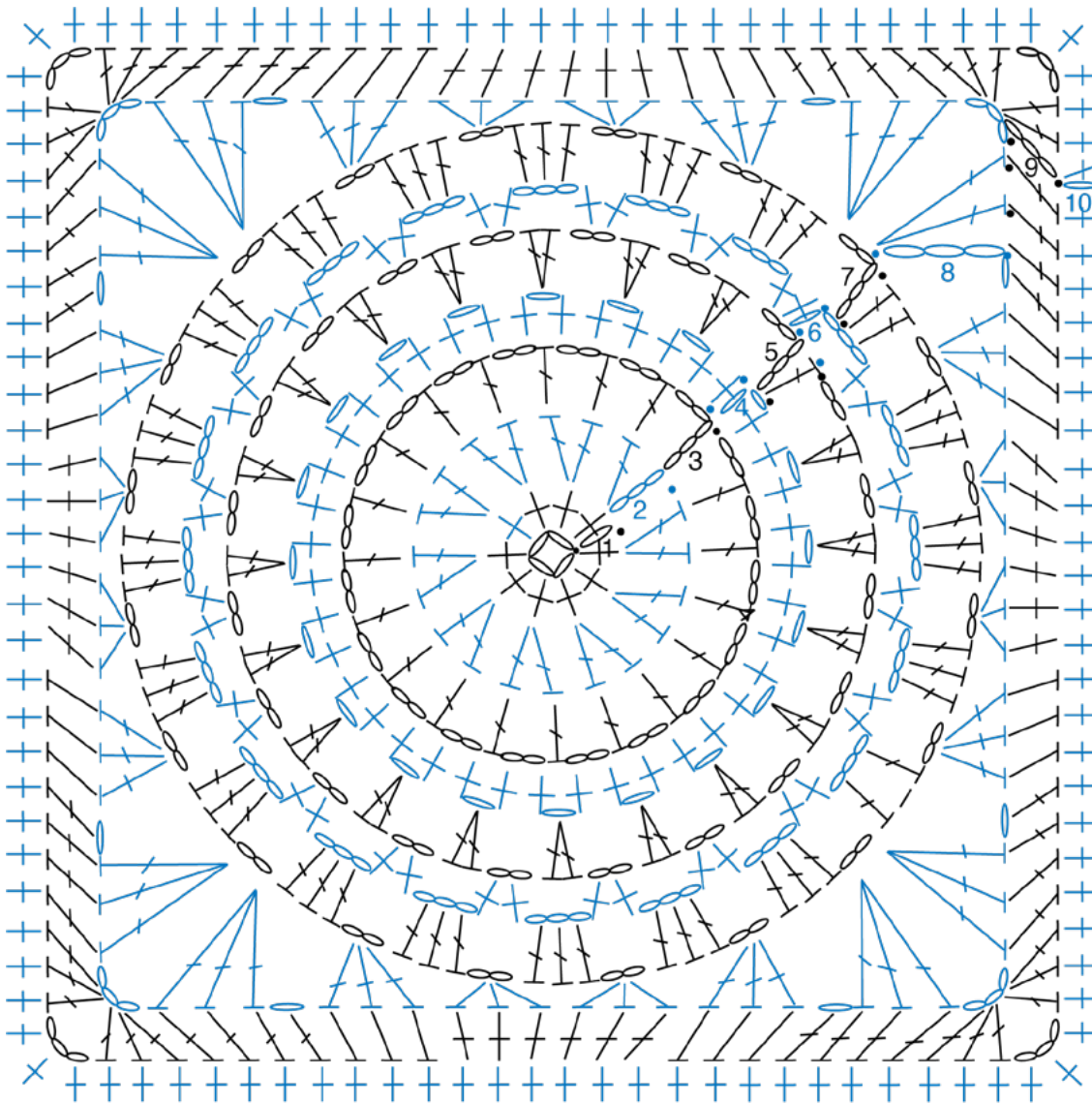
3rd rnd: Join C with sl st in any corner ch-2 sp. Ch 1. (1 sc. Ch 2. 1 sc) in same sp as sl st. [*Ch 1. Skip next sc. 1 sc in next ch-1 sp.* Rep from * to * to next ch-2 sp. Ch 1. (1 sc. Ch 2. 1 sc) in next ch-2 sp] 3 times. Rep from * to * to end of rnd. Ch 1. Join with sl st to first sc. Fasten off.

4th rnd: With A, as 3rd rnd.

5th rnd: With B, as 3rd rnd.

6th rnd: With MC, as 3rd rnd.

7th rnd: Join D with sl st in corner ch-2 sp. Ch 1. 3 sc in same sp as sl st. Picot. [*1 sc in each of next 3 sts (sc and ch-1). Picot.* Rep from * to * to next corner ch-2 sp. 3 sc in next ch-2 sp. Picot] 3 times. Rep from * to * to end of rnd. Join with sl st to first sc. Fasten off.



MOTIF

Assembly Diagram

